

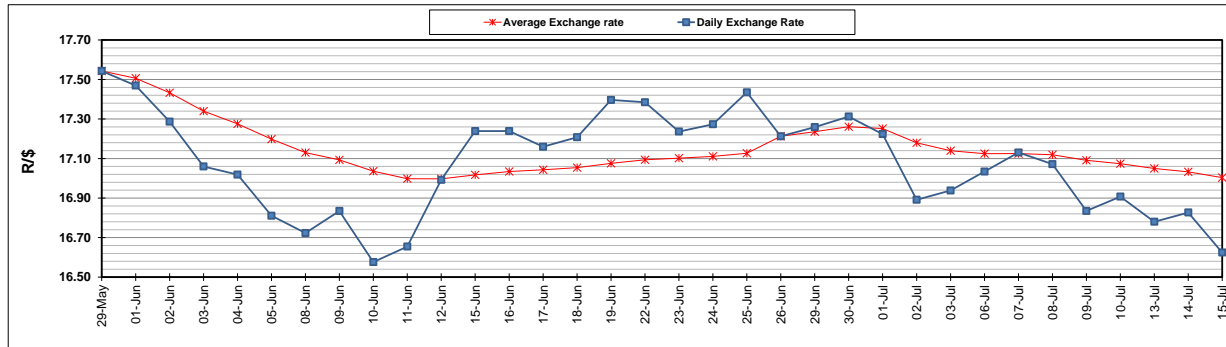
	PETROL 95 ULP	PETROL 93 ULP & LRP	DIESEL 0.05%	DIESEL 0.005%	ILL. PAR.
GAUTENG PUMP PRICE (SA c/l) AS FROM 01/07/2020	1,512.000	1,483.000	-	-	-
WHOLESALE PRICE (SA c/l) AS FROM 01/07/2020	-	-	1,303.560	1,307.960	703.828
SINGLE NATIONAL MAXIMUM RETAIL PRICE	-	-	-	-	882.000
BASIC FUEL PRICE - 15/07/2020 (SA c/l)	549.873	540.019	574.646	579.505	511.213
PRESS RELEASE CONTRIBUTION TO BFP 01/07/2020 - 15/07/2020 (SA c/l)	564.770	545.770	552.630	557.030	499.128
UNIT OVER/(UNDER) RECOVERY - 15/07/2020 (SA c/l)	14.897	5.751	(22.016)	(22.475)	(12.085)
AVERAGE BASIC FUEL PRICE 26/06/2020 - 15/07/2020	557.934	542.642	580.583	584.954	512.750
AVERAGE UNIT OVER/(UNDER) RECOVERY 26/06/2020 - 15/07/2020	(30.021)	(31.801)	(65.024)	(64.139)	(59.479)

### ANALYSIS MOVEMENT OF AVERAGE OVER/(UNDER) RECOVERY

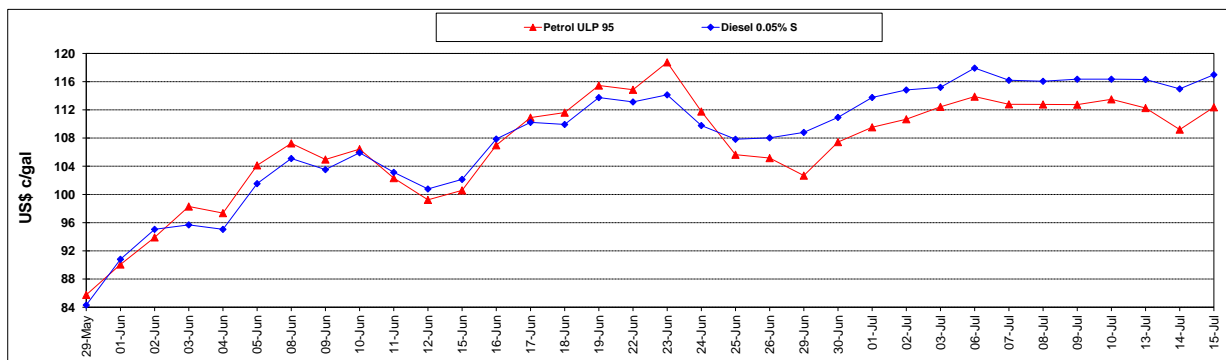
	PETROL 95	PETROL 93	DIESEL 0.05%	DIESEL 0.005%	ILL. PAR.
- MOVEMENT IN INTERNATIONAL PRODUCT PRICES	(34.080)	(35.749)	(69.248)	(68.394)	(63.209)
- MOVEMENT IN EXCHANGE RATE	4.059	3.948	4.224	4.256	3.730
AVERAGE UNIT OVER/(UNDER) RECOVERY 26/06/2020 - 15/07/2020	(30.021)	(31.801)	(65.024)	(64.139)	(59.479)

### R/\$ EXCHANGE RATE - (R/\$16.6243 - 15/07/2020)

#### EXCHANGE RATE USED IN BASIC FUEL PRICE



#### INTERNATIONAL PRODUCT PRICES OF BASKET USED IN BASIC FUEL PRICE



#### BASIC FUEL PRICE IN SA CENTS PER LITRE

